

**ProLight PG1N-RX10
PG1N-RY10
Reflector
Technical Datasheet**

Features

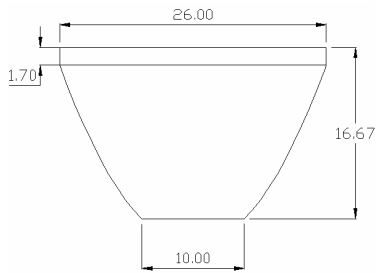
- 10° viewing angle
- Works with all ProLight products

Typical Applications

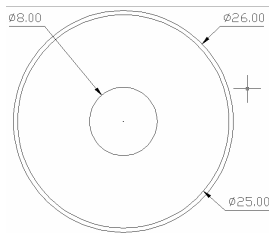
- Torch light
- Reading lights (car, bus, aircraft)
- Portable (flashlight, bicycle)
- Mini-accent / Decorative / Fiber Optics Alternative
- Undershelf / Task Lighting
- Indoor and Outdoor Commercial and Residential Architectural lighting

Mechanical Dimensions

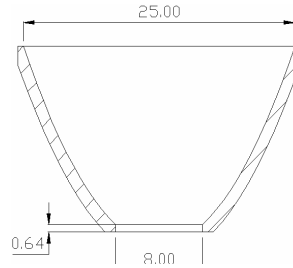
PG1N-RX10



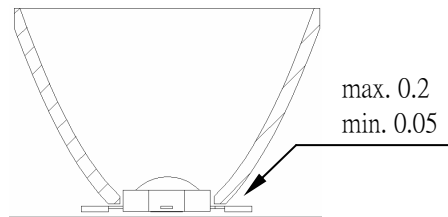
TOP VIEW



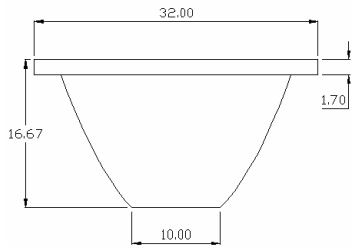
SECTION VIEW



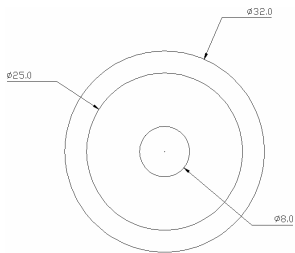
Clearance between Reflector and LED



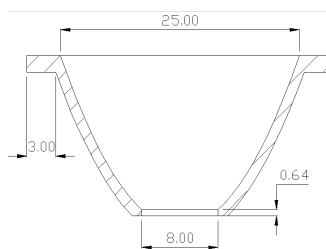
PG1N-RY10



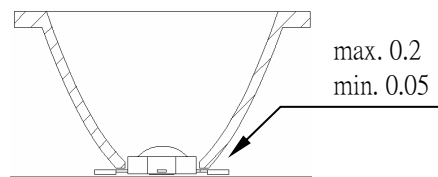
TOP VIEW



SECTION VIEW



Clearance between Reflector and LED



Notes:

1. All dimensions in millimeters.
2. Do not subject to temperatures greater than 75°C as plastic deformation may occur. Protect reflector against exposure to solvents and adhesives that are not compatible with it. Use care in handling the optic to avoid scratches or other damage that will effect the optical performance.

Representative Spatial Radiation Pattern

Lambertian Radiation Pattern

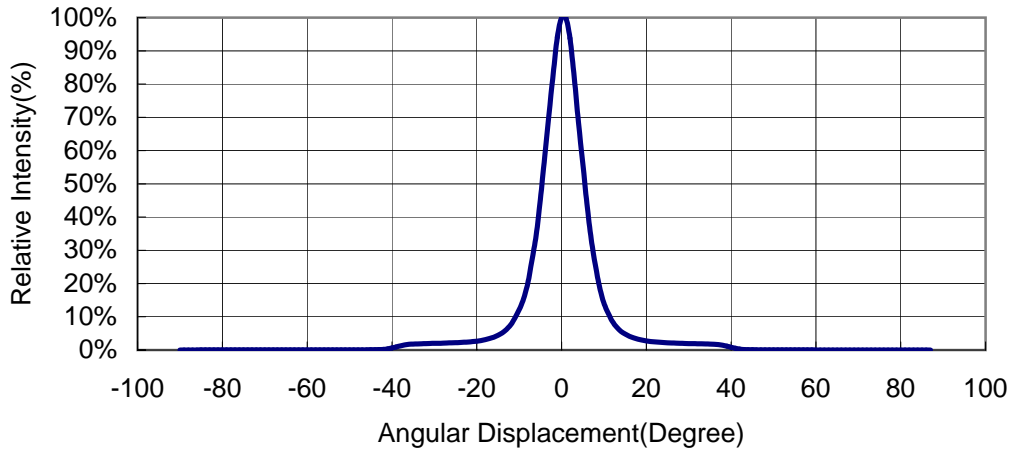


Figure 1. Representative Spatial Radiation for ProLight WHITE color emitter with PG1N-RX10 and PG1N-RY10

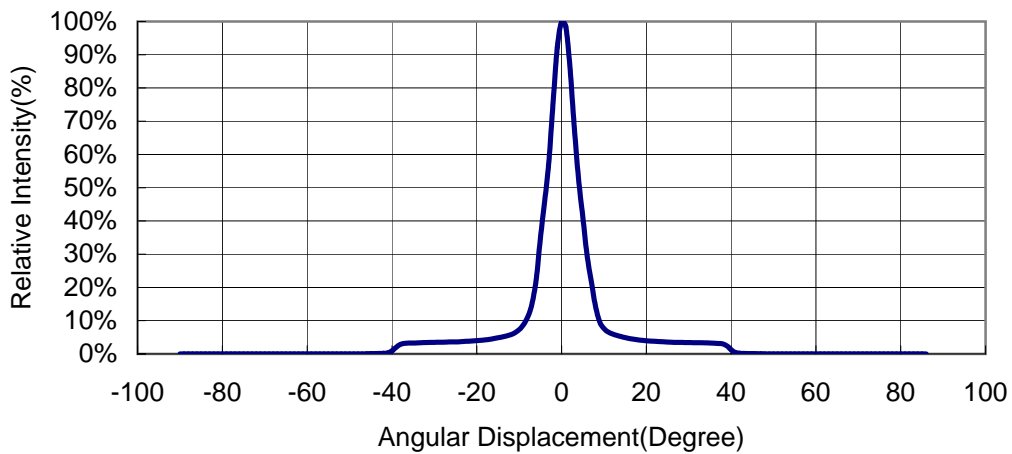


Figure 2. Representative Spatial Radiation for ProLight RED, GREEN and BLUE color emitter with PG1N-RX10 and PG1N-